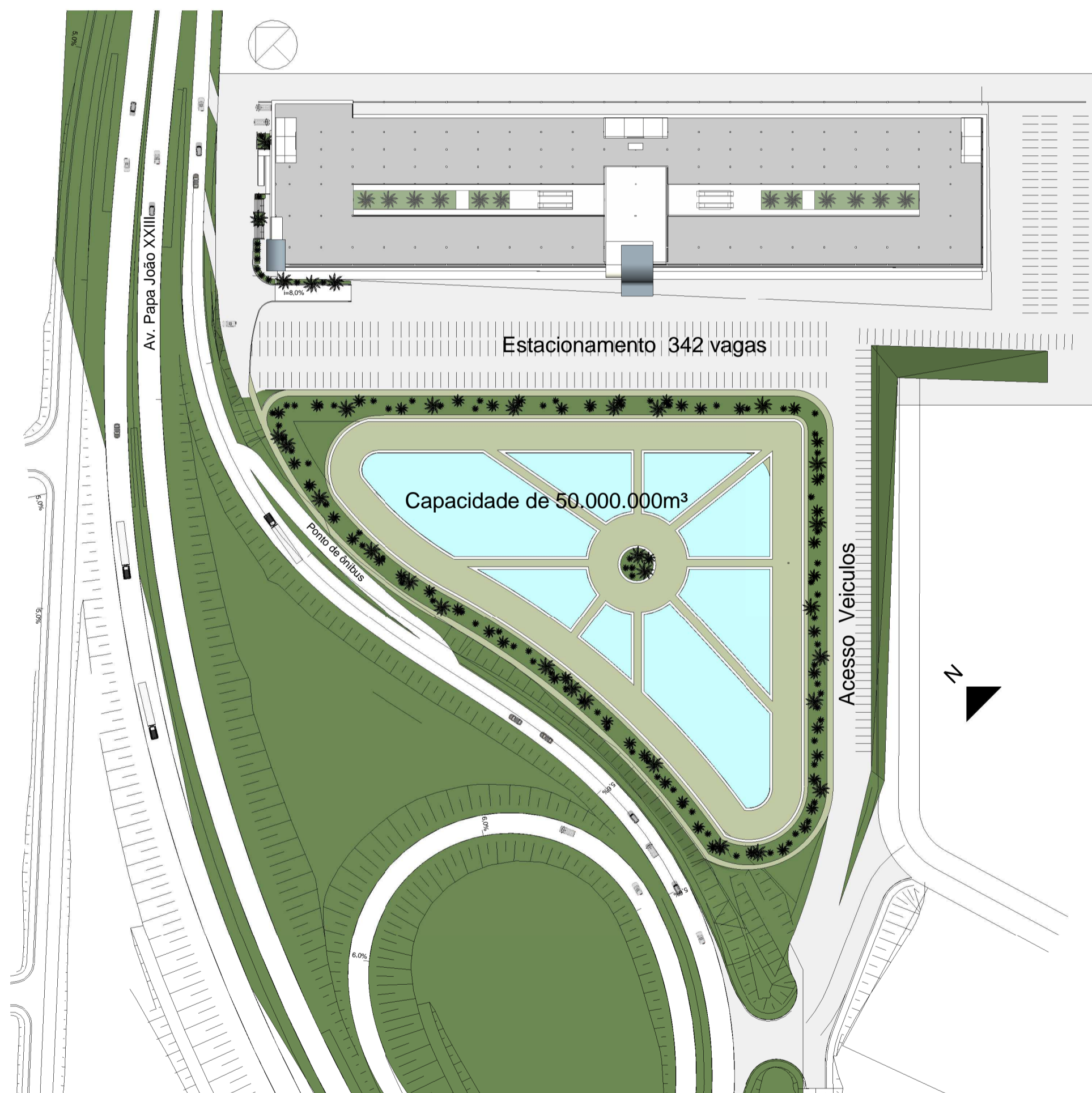
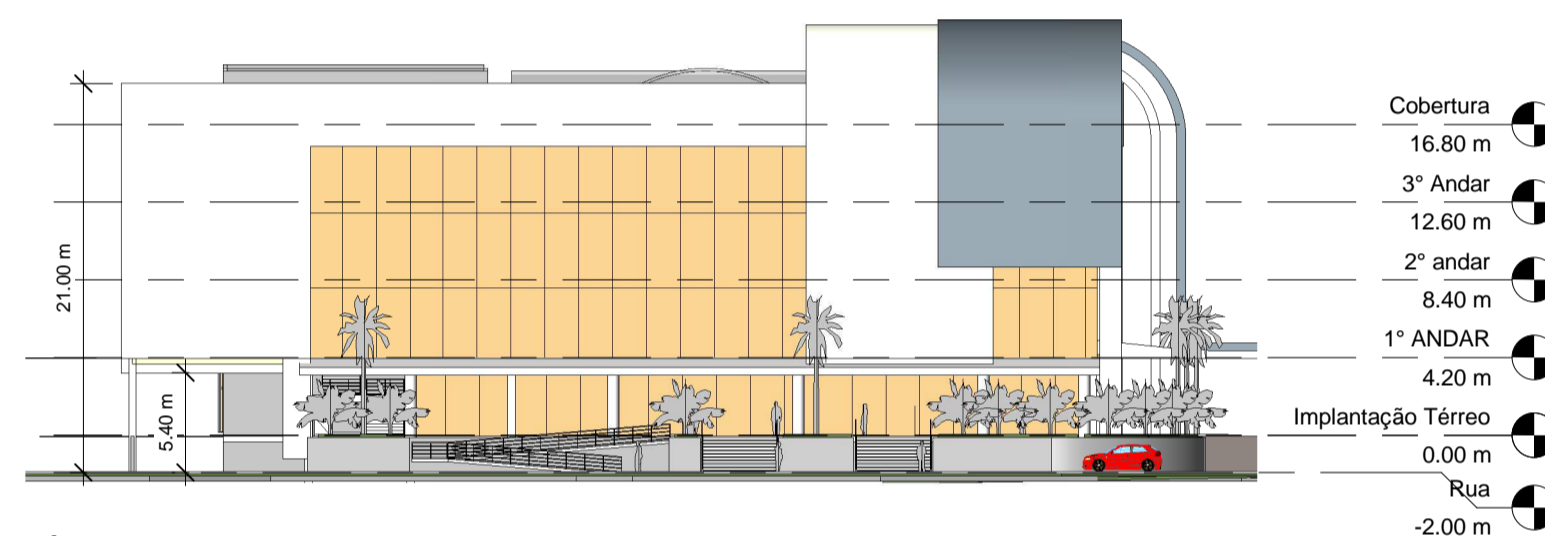


3 South  
1 : 300



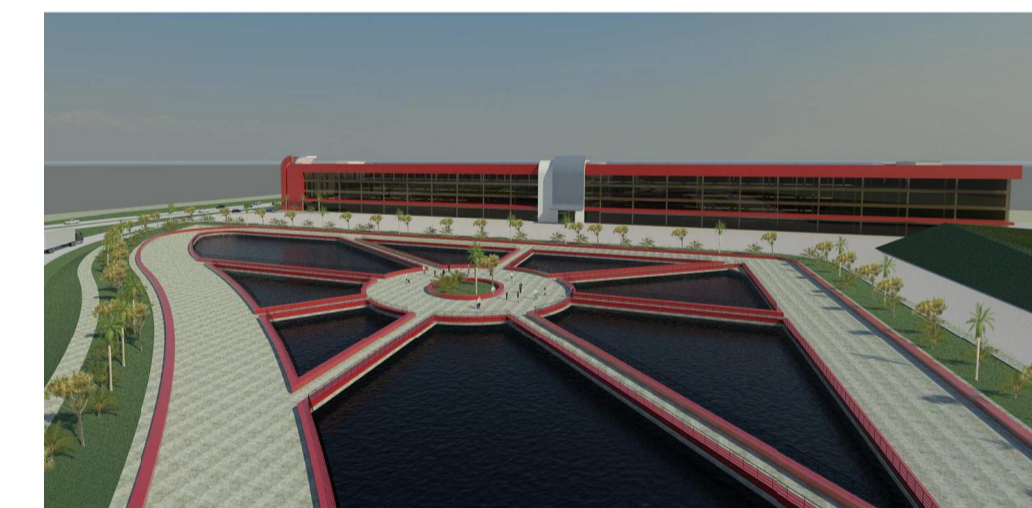
1 Implantação  
1 : 1000



2 Leste  
1 : 300



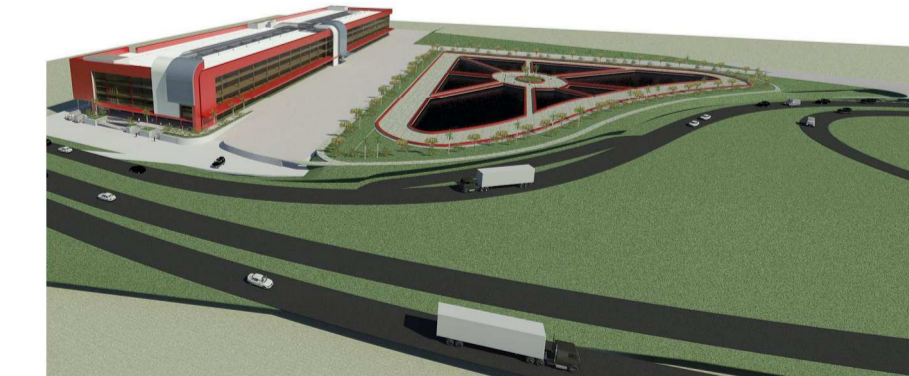
7 3D View 22\_15  
1 : 1



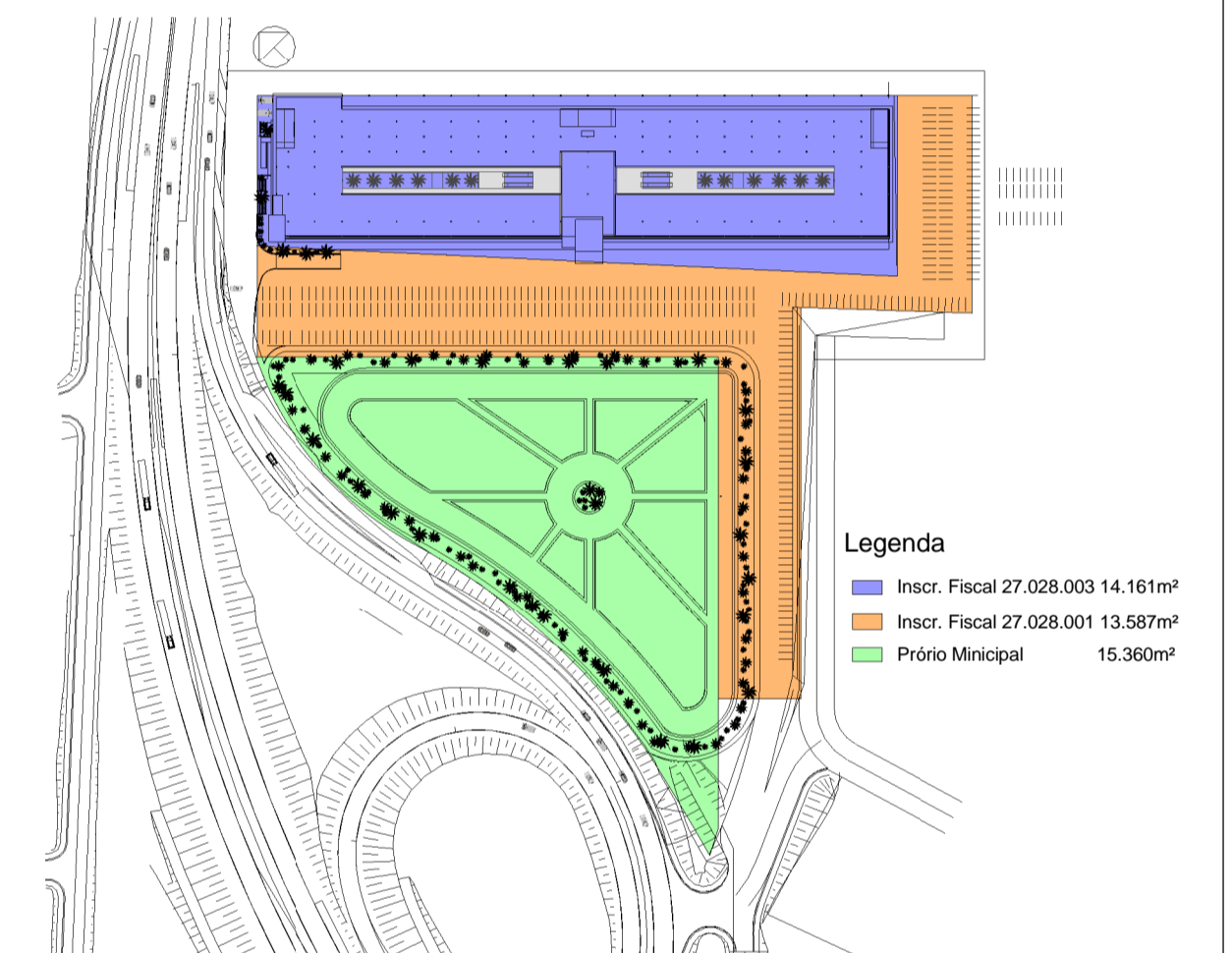
4 3D View 19\_17  
1 : 1



5 3D View 20\_20  
1 : 1



6 3D View 22\_21  
1 : 1



9 Planta Chave Matriculas  
1 : 2000

		Projeto Centro Comercial Mauá	
		Implantação e Elevações	
SITUAÇÃO SEM ESCALA		<b>Quadro de Áreas</b> Terreno Matrícula .... Térreo 10.791m² 1º Andar 9.000m² 2º Andar 9.000m² 3º Andar 9.000m² Total 37.791m²	
Nº Projeto	CCM 001	<b>FL 01/05</b> Scale As indicated	
Data	03/09/2012		
Projeto	E. Guerreiro		
Aprovado	N. Bonadio		